

Model 40HEX35

Inclined Tube Manometer

Model 40HEX35-WM inclined well type manometer for wall mounting is offered with scales from 20" to 60" long in differential ranges from 2" to 20". This economical and durable instrument fills the high sensitivity and accuracy requirements for low differential pressure ranges at operating pressures up to 350 PSI.

Inclined manometers provide greater readability by stretching a vertical differential along an inclined indicating column, giving more graduations per unit of vertical height and increasing the instrument's sensitivity and accuracy. Inclined manometers frequently have scales graduated to hundredths of an inch.

The Model 40HEX35 is often used to indicate differential across Meriam Laminar Flow Elements, Accutubes and Orifice Plates in gas flow applications.

Model 40HEX35 Construction

Model 40HEX35-WM inclined manometer has an aluminum channel with stainless steel end blocks into which a large bore, borosilicate glass tube is securely yoke packed with viton gaskets. The removable well is bolted to the back plate and connected to the glass tube through the lower end block. All pressure connections are 1/4" female pipe thread.

The scale with satin background, bold black figures, and precision graduations spans the full channel width behind the indicating tube. Scale and tube are protected by a transparent cover.

Each Model 40HEX35 is individually calibrated and the angle of inclination is set relative to the instrument level mounted above the channel.

The instrument finish is black textured urethane.

Fluid Requirements per Tube & Instrument Weight

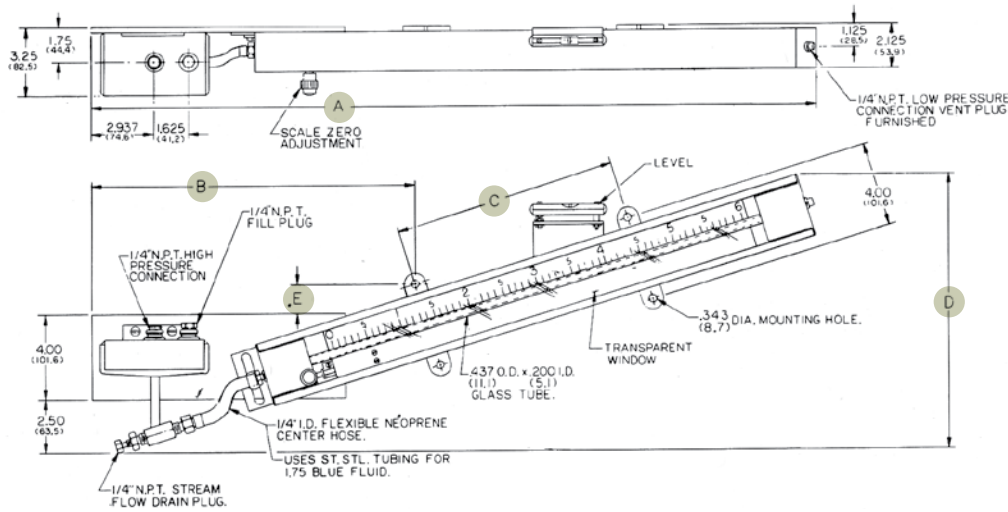
Scale Length	20"	30"	40"	50"	60"
Weight-lbs.	25	30	35	40	45
Fill Fluid Req.	4 oz.	4 oz.	4 oz.	4 oz.	4 oz.

Ranges and Scales

Scale Length	Ranges in inches with Scale graduated inches & hundredths	Ranges in inches with Scale graduated inches and fiftieths
20"	2", 4"	6", 8", 10"
30"	4", 6", 8"	10", 12", 14"
40"	4", 6", 8", 10"	12", 14", 16", 18", 20"
50"	4", 6", 8", 10", 12"	14", 16", 18", 20"
60"	6", 8", 10", 12", 14"	16", 18", 20"

Model 40HEX35

Inclined Tube Manometer



20" SCALE LENGTH

Range	A	B	C	D	E
2"	34.68 (881.04)	15.93 (404.81)	10.50 (266.7)	8.375 (212.72)	.50 (12.7)
4"	34.50 (876.3)	15.62 (396.87)	10.50 (266.7)	10.68 (271.46)	.937 (23.81)
6"	34.06 (865.18)	15.31 (388.93)	10.50 (266.7)	13.00 (330.2)	1.375 (34.92)
8"	33.31 (846.13)	14.93 (379.41)	10.50 (266.7)	15.25 (387.35)	1.812 (46.03)
10"	32.31 (820.74)	14.50 (368.3)	10.50 (266.7)	17.50 (444.5)	2.187 (55.56)

30" SCALE LENGTH

Range	A	B	C	D	E
4"	44.56 (1131.8)	15.81 (401.6)	20.50 (520.7)	10.43 (265.1)	.625 (15.87)
6"	44.31 (1125.4)	15.62 (396.8)	20.50 (520.7)	12.62 (320.6)	.937 (23.81)
8"	43.87 (1114.4)	15.43 (392.1)	20.50 (520.7)	14.87 (377.8)	1.25 (31.75)
10"	43.25 (1098.5)	15.18 (385.7)	20.50 (520.7)	17.06 (433.3)	1.50 (38.1)
12"	42.50 (1079.5)	14.93 (379.4)	20.50 (520.7)	19.25 (488.9)	1.81 (46.0)
14"	41.56 (1055.6)	14.62 (371.4)	20.50 (520.7)	21.43 (544.5)	2.06 (52.3)

40" SCALE LENGTH

Range	A	B	C	D	E
4"	54.56 (1385.8)	15.93 (404.8)	30.50 (774.7)	10.31 (261.9)	.50 (12.7)
6"	54.37 (1381.1)	15.75 (400.0)	30.50 (774.7)	12.43 (315.9)	.687 (17.4)
8"	540.06 (1363.1)	15.62 (396.8)	30.50 (774.7)	14.62 (371.4)	.937 (23.8)
10"	53.68 (1333.5)	15.50 (393.7)	30.50 (774.7)	16.75 (425.4)	1.187 (30.1)
12"	53.12 (1349.4)	15.31 (388.9)	30.50 (774.7)	18.93 (481.0)	1.375 (34.9)
14"	52.50 (1333.5)	15.12 (384.1)	30.50 (774.7)	21.06 (534.9)	1.56 (39.6)
16"	51.68 (1312.8)	14.93 (379.4)	30.50 (774.7)	23.18 (588.9)	1.81 (46.0)
18"	50.75 (1289.0)	14.68 (373.0)	30.50 (774.7)	25.31 (642.9)	2.00 (50.8)
20"	49.68 (1262.01)	14.50 (368.3)	30.50 (774.7)	27.43 (696.9)	2.18 (55.5)

50" SCALE LENGTH

Range	A	B	C	D	E
4"	64.62 (1641.4)	16.00 (406.4)	40.50 (1281.7)	10.18 (258.7)	.375 (9.52)
6"	64.43 (1636.7)	15.87 (403.2)	40.50 (1281.7)	12.31 (312.7)	.562 (14.2)
8"	64.25 (1631.9)	15.75 (400.0)	40.50 (1281.7)	14.43 (366.7)	.750 (19.0)
10"	63.87 (1622.4)	15.62 (396.8)	40.50 (1281.7)	16.56 (420.6)	.937 (23.8)
12"	63.50 (1612.9)	15.50 (393.7)	40.50 (1281.7)	18.68 (474.6)	1.12 (28.5)
14"	63.00 (1600.2)	15.37 (390.5)	40.50 (1281.7)	20.81 (528.6)	1.31 (33.3)
16"	62.37 (1584.3)	15.25 (387.3)	40.50 (1281.7)	22.93 (582.6)	1.43 (36.5)
18"	61.68 (1566.8)	15.12 (384.1)	40.50 (1281.7)	25.06 (636.5)	1.62 (41.2)
20"	60.87 (1546.2)	14.93 (379.4)	40.50 (1281.7)	27.18 (690.5)	1.81 (46.0)

60" SCALE LENGTH

Range	A	B	C	D	E
6"	74.50 (1892.3)	15.93 (404.8)	50.50 (1282.7)	12.25 (311.1)	.50 (12.7)
8"	74.31 (1887.5)	15.81 (401.6)	50.50 (1282.7)	14.31 (363.5)	.625 (15.8)
10"	74.06 (1881.6)	15.75 (400.0)	50.50 (1282.7)	16.43 (417.5)	.750 (19.0)
12"	73.68 (1871.6)	15.62 (396.8)	50.50 (1282.7)	18.56 (471.4)	.937 (23.8)
14"	73.31 (1862.1)	15.56 (395.2)	50.50 (1282.7)	20.62 (523.8)	1.06 (26.9)
16"	72.81 (1849.4)	15.43 (392.1)	50.50 (1282.7)	22.75 (577.8)	1.25 (31.7)
18"	72.25 (1835.1)	15.31 (388.9)	50.50 (1282.7)	24.81 (630.2)	1.37 (34.9)
20"	71.62 (1819.2)	15.18 (385.7)	50.50 (1282.7)	26.93 (684.2)	1.50 (38.1)

Specifications

Type Inclined Tube

Range 2", 4", 6", 8", 10", 12", 14", 16", 18", 20"

Pressure Rating 350 psig

Body Construction Aluminum Channel

Wetted Parts Material 304 SS

Connections 1/4" NPT pressure, 1/4" drain

Scale Finish White non-glare satin with black graduations

Finish Black Textured urethane

Scale Graduations Inches and Fiftieths, Inches and Hundredths or Special flow scales

Ordering Information

To order Meriam's 40HEX35 manometer custom-made to your specifications, please contact your Meriam sales representative with the following information:

- Model
- Scale Length
- Differential Range

Accessories:

Check Valve Model Z942K50
 3 Valve & Piping Manifold (Steel) Z943AC300 STL
 3 Valve & Piping Manifold (SS) Z943AC300 ST.STL