



Model 952

Orifice Flanges

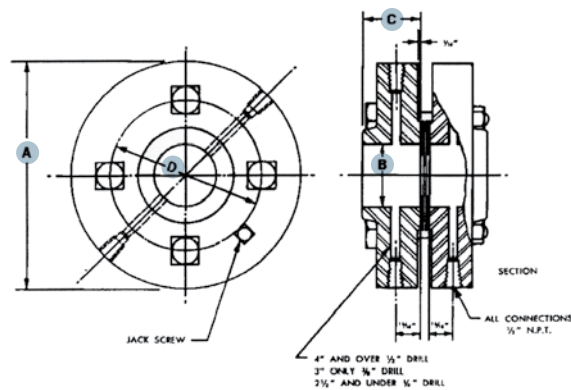
Meriam raised face orifice flange unions are designed to provide a convenient, accurate method for installing orifice plates. They incorporate accurately positioned pressure taps for connecting the flow measuring instruments. This eliminates the requirement of locating pressure taps in the field. Improper location of these taps will result in poor accuracy of the flow measuring system. These built-in taps also reduce field installation labor necessary for welding, drilling and/or tapping pressure taps on the flow line itself. Meriam orifice flanges are provided complete with nuts, bolts, gaskets and plugs for installation with no other parts required.

Ordering Information

When ordering Meriam's orifice flanges, simply choose to the part number on these pages that fits your application. Flange rating options are available in 300 or 150 PVC. Connection options include slip-on, weld neck or threaded.

Model 952 FS 30 – forged steel, slip-on welding; 300 lb. raised face

For systems where welded connections are required. These flanges are slipped over the pipe which is brought flush with the flange face. The pipe is then welded to the flange.



Drilling Template

Line Pipe Size	Flange O.D. A	Bore Dia. B	Hub Length C	Dia. Raised Face	No. of Holes	Dia. of Holes	Dia. of Bolts	Length of Bolts	Bolt Circle D	Approx. Union Weight
1	4 ⁷ / ₈	1 ³ / ₈	1 ⁷ / ₈	2 ¹³ / ₁₆	4	1 ¹¹ / ₁₆	5/8	4	3 ¹ / ₂	15 lbs.
1 ¹ / ₄	5 ¹ / ₄	1 ²³ / ₃₂	1 ¹³ / ₁₆	3 ³ / ₁₆	4	1 ¹¹ / ₁₆	5/8	4	3 ⁷ / ₈	17 lbs.
1 ¹ / ₂	6 ¹ / ₈	1 ³¹ / ₃₂	1 ⁷ / ₈	3 ¹¹ / ₁₆	4	1 ³ / ₁₆	3/4	4 ¹ / ₄	4 ¹ / ₂	19 lbs.
2	6 ¹ / ₂	2 ¹ / ₁₆	1 ¹⁵ / ₁₆	4 ⁵ / ₁₆	8	1 ¹¹ / ₁₆	5/8	4	5	23 lbs.
2 ¹ / ₂	7 ¹ / ₂	2 ¹⁵ / ₁₆	2	5 ¹ / ₁₆	8	1 ³ / ₁₆	3/4	4 ¹ / ₄	5 ⁵ / ₈	31 lbs.
3	8 ¹ / ₄	3 ⁹ / ₁₆	2 ¹ / ₁₆	5 ¹³ / ₁₆	8	1 ³ / ₁₆	3/4	4 ¹ / ₄	6 ⁵ / ₈	39 lbs.
4	10	4 ⁹ / ₁₆	2 ¹ / ₈	7 ¹ / ₁₆	8	1 ³ / ₁₆	3/4	4 ¹ / ₄	7 ⁷ / ₈	60 lbs.
5	11	5 ²¹ / ₃₂	2 ¹ / ₈	8 ³ / ₈	8	7/8	3/4	4 ¹ / ₄	9 ¹ / ₄	70 lbs.
6	12 ¹ / ₂	6 ²³ / ₃₂	2 ¹ / ₈	9 ³ / ₄	12	7/8	3/4	4 ¹ / ₄	10 ⁵ / ₈	100 lbs.
8	15	8 ²³ / ₃₂	2 ⁷ / ₁₆	12	12	1	7/8	4 ¹ / ₂	13	134 lbs.
10	17 ¹ / ₂	10 ⁷ / ₈	2 ⁵ / ₈	14 ¹ / ₈	16	1 ¹ / ₈	1	5 ¹ / ₄	15 ¹ / ₄	196 lbs.
12	20 ¹ / ₂	12 ⁷ / ₈	2 ⁷ / ₈	16 ¹ / ₂	16	1 ¹ / ₄	1 ¹ / ₈	5 ¹ / ₂	17 ³ / ₄	281 lbs.
14	23	14 ³ / ₁₆	3	19	20	1 ¹ / ₄	1 ¹ / ₈	5 ³ / ₄	20 ¹ / ₄	380 lbs.
16	25 ¹ / ₂	16 ³ / ₁₆	3 ¹ / ₄	21 ¹ / ₈	20	1 ³ / ₈	1 ¹ / ₄	6 ¹ / ₄	22 ¹ / ₂	620 lbs.
18	28	18 ³ / ₁₆	3 ¹ / ₂	23 ³ / ₈	24	1 ³ / ₈	1 ¹ / ₄	6 ¹ / ₂	24 ³ / ₄	691 lbs.
20	30 ¹ / ₂	20 ³ / ₁₆	3 ³ / ₄	25 ⁵ / ₈	24	1 ³ / ₈	1 ¹ / ₄	6 ³ / ₄	27	781 lbs.
24	36	24 ³ / ₁₆	4 ³ / ₁₆	30 ³ / ₈	24	1 ⁵ / ₈	1 ¹ / ₂	7 ¹ / ₂	32	1201 lbs.

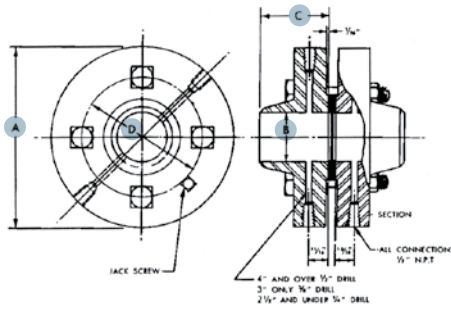
All Dimensions are in inches

Model 952

Orifice Flanges

Model 952 FW 30 - forged steel, welding neck; 300 lb. raised face

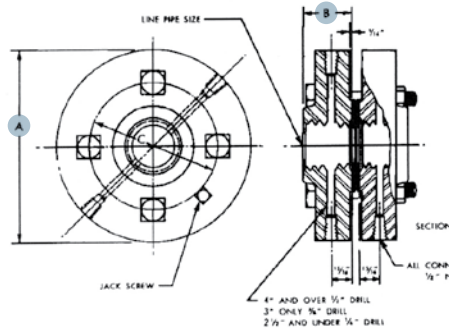
Similar to slip-on welding model but for use where weld neck is preferred. These flanges are butted up against the ends of the pipe and welded in place.



					Drilling Template					
Line Pipe Size	Flange O.D. A	Bore Dia. B	Hub Length C	Dia. Raised Face	No. of Holes	Dia. of Holes	Dia. of Bolts	Length of Bolts	Bolt Circle D	Approx. Union Weight
1	4 ⁷ / ₈	1 ³ / ₈	1 ⁷ / ₈	2 ¹³ / ₁₆	4	1 ¹¹ / ₁₆	5 ⁵ / ₈	4	3 ¹ / ₂	15 lbs.
1 ¹ / ₄	5 ¹ / ₄	1 ²³ / ₃₂	1 ¹³ / ₁₆	3 ³ / ₁₆	4	1 ¹¹ / ₁₆	5 ⁵ / ₈	4	3 ⁷ / ₈	17 lbs.
1 ¹ / ₂	6 ¹ / ₂	1 ³¹ / ₃₂	1 ⁷ / ₈	3 ¹¹ / ₁₆	4	1 ³ / ₁₆	3 ³ / ₄	4 ¹ / ₄	4 ¹ / ₂	19 lbs.
2	6 ¹ / ₂	2 ¹ / ₁₆	1 ¹⁵ / ₁₆	4 ⁵ / ₁₆	8	1 ¹¹ / ₁₆	5 ⁵ / ₈	4	5	23 lbs.
2 ¹ / ₂	7 ¹ / ₂	2 ¹⁵ / ₁₆	2	5 ¹ / ₁₆	8	1 ³ / ₁₆	3 ³ / ₄	4 ¹ / ₄	5 ⁵ / ₈	31 lbs.
3	8 ¹ / ₄	3 ³ / ₁₆	2 ¹ / ₁₆	5 ¹³ / ₁₆	8	1 ³ / ₁₆	3 ³ / ₄	4 ¹ / ₄	6 ⁵ / ₈	39 lbs.
4	10	4 ⁹ / ₁₆	2 ¹ / ₈	7 ¹ / ₁₆	8	1 ³ / ₁₆	3 ³ / ₄	4 ¹ / ₄	7 ⁷ / ₈	60 lbs.
5	11	5 ²¹ / ₃₂	2 ¹ / ₈	8 ³ / ₈	8	7 ⁷ / ₈	3 ³ / ₄	4 ¹ / ₄	9 ¹ / ₄	70 lbs.
6	12 ¹ / ₂	6 ²³ / ₃₂	2 ¹ / ₈	9 ³ / ₄	12	7 ⁷ / ₈	3 ³ / ₄	4 ¹ / ₄	10 ⁵ / ₈	100 lbs.
8	15	8 ²³ / ₃₂	2 ¹ / ₁₆	12	12	1	7 ⁷ / ₈	4 ¹ / ₂	13	134 lbs.
10	17 ¹ / ₂	10 ⁷ / ₈	2 ⁵ / ₈	14 ¹ / ₈	16	1 ¹ / ₈	1	5 ¹ / ₄	15 ¹ / ₄	196 lbs.
12	20 ¹ / ₂	12 ⁷ / ₈	2 ⁷ / ₈	16 ¹ / ₂	16	1 ¹ / ₄	1 ¹ / ₈	5 ¹ / ₂	17 ³ / ₄	281 lbs.
14	23	14 ³ / ₁₆	3	19	20	1 ¹ / ₄	1 ¹ / ₈	5 ³ / ₄	20 ¹ / ₄	380 lbs.
16	25 ¹ / ₂	16 ³ / ₁₆	3 ¹ / ₄	21 ¹ / ₈	20	1 ³ / ₈	1 ¹ / ₄	6 ¹ / ₄	22 ¹ / ₂	620 lbs.
18	28	18 ³ / ₁₆	3 ¹ / ₂	23 ³ / ₈	24	1 ³ / ₈	1 ¹ / ₄	6 ¹ / ₂	24 ³ / ₄	691 lbs.
20	30 ¹ / ₂	20 ³ / ₁₆	3 ³ / ₄	25 ⁵ / ₈	24	1 ³ / ₈	1 ¹ / ₄	6 ³ / ₄	27	781 lbs.
24	36	24 ³ / ₁₆	4 ³ / ₁₆	30 ³ / ₈	24	1 ⁵ / ₈	1 ¹ / ₂	7 ¹ / ₂	32	1201 lbs.

Model 952 FT 30 - forged steel, threaded; 300 lb. raised face

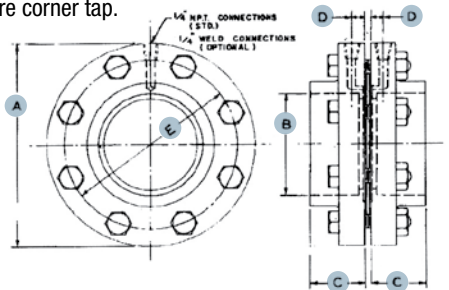
Designed for systems where threaded connections are suitable and conditions require forged steel.



					Drilling Template					
Line Pipe Size	Flange O.D. A	Hub Length B	Dia. Raised Face	No. of Holes	Dia. of Holes	Dia. of Bolts	Length of Bolts	Bolt Circle C	Approx. Union Weight	
1	4 ⁷ / ₈	1 ⁷ / ₈	2 ¹³ / ₁₆	4	1 ¹¹ / ₁₆	5 ⁵ / ₈	4	3 ¹ / ₂	15 lbs.	
1 ¹ / ₄	5 ¹ / ₄	1 ¹³ / ₁₆	3 ³ / ₁₆	4	1 ¹¹ / ₁₆	5 ⁵ / ₈	4	3 ⁷ / ₈	17 lbs.	
1 ¹ / ₂	6 ¹ / ₈	1 ⁷ / ₈	3 ¹¹ / ₁₆	4	1 ³ / ₁₆	3 ³ / ₄	4 ¹ / ₄	4 ¹ / ₂	19 lbs.	
2	6 ¹ / ₂	1 ¹⁵ / ₁₆	4 ⁵ / ₁₆	8	1 ¹¹ / ₁₆	5 ⁵ / ₈	4	5	23 lbs.	
2 ¹ / ₂	7 ¹ / ₂	2	5 ¹ / ₁₆	8	1 ³ / ₁₆	3 ³ / ₄	4 ¹ / ₄	5 ⁵ / ₈	31 lbs.	
3	8 ¹ / ₄	2 ¹ / ₁₆	5 ¹³ / ₁₆	8	1 ³ / ₁₆	3 ³ / ₄	4 ¹ / ₄	6 ⁵ / ₈	39 lbs.	
4	10	2 ¹ / ₈	7 ¹ / ₁₆	8	1 ³ / ₁₆	3 ³ / ₄	4 ¹ / ₄	7 ⁷ / ₈	60 lbs.	
5	11	2 ¹ / ₈	8 ³ / ₈	8	7 ⁷ / ₈	3 ³ / ₄	4 ¹ / ₄	9 ¹ / ₄	70 lbs.	
6	12 ¹ / ₂	2 ¹ / ₈	9 ³ / ₄	12	7 ⁷ / ₈	3 ³ / ₄	4 ¹ / ₄	10 ⁵ / ₈	100 lbs.	
8	15	2 ¹ / ₁₆	12	12	1	7 ⁷ / ₈	4 ¹ / ₂	13	134 lbs.	
10	17 ¹ / ₂	2 ⁵ / ₈	14 ¹ / ₈	16	1 ¹ / ₈	1	5 ¹ / ₄	15 ¹ / ₄	196 lbs.	
12	20 ¹ / ₂	2 ⁷ / ₈	16 ¹ / ₂	16	1 ¹ / ₄	1 ¹ / ₈	5 ¹ / ₂	17 ³ / ₄	281 lbs.	

Model 952 PV 15 - PVC socket type; 150 lb. raised face

PVC orifice flanges are socket type where connecting line is solvent welded to flanges. Pressure connections are corner tap.



MAX OPERATING TEMPERATURE 150°F
MAX OPERATING PRESSURE 150PSIG

					Drilling Template					
Line Pipe Size	Flange O.D. A	Bore Dia. B	Hub Length C	D	No. of Holes	Dia. of Holes	Dia. of Bolts	Length of Bolts	Bolt Circle E	Approx. Union Weight
3/4	4 ¹ / ₂	1.056	1 ¹ / ₄	5 ⁵ / ₈	4	5 ⁵ / ₈	1 ¹ / ₂	3 ¹ / ₂	2 ³ / ₄	1 lbs.
1	4 ¹ / ₂	1.320	1 ¹ / ₄	5 ⁵ / ₈	4	5 ⁵ / ₈	1 ¹ / ₂	3 ¹ / ₂	3 ¹ / ₈	1 ¹ / ₂ lbs.
1 ¹ / ₄	5	1.665	1 ¹ / ₂	3 ³ / ₄	4	5 ⁵ / ₈	1 ¹ / ₂	4	3 ¹ / ₂	2 lbs.
1 ¹ / ₂	5	1.905	1 ¹ / ₂	3 ³ / ₄	4	5 ⁵ / ₈	1 ¹ / ₂	4	3 ⁷ / ₈	2 ¹ / ₂ lbs.
2	6	2.380	1 ⁵ / ₈	1 ³ / ₁₆	4	3 ³ / ₄	5 ⁵ / ₈	4 ¹ / ₂	4 ³ / ₄	3 lbs.
2 ¹ / ₂	7	2.890	1 ⁷ / ₈	1 ⁵ / ₁₆	4	3 ³ / ₄	5 ⁵ / ₈	3	5 ¹ / ₂	4 ¹ / ₂ lbs.
3	7 ¹ / ₂	3.515	2	1 ¹ / ₂	4	3 ³ / ₄	5 ⁵ / ₈	3 ¹ / ₂	6	5 lbs.
4	9	4.515	2 ³ / ₈	1 ¹ / ₂	8	3 ³ / ₄	5 ⁵ / ₈	3 ¹ / ₂	7 ¹ / ₂	7 lbs.
6	11	6.640	3 ¹ / ₄	9 ¹ / ₁₆	8	7 ⁷ / ₈	3 ³ / ₄	3 ¹ / ₂	9 ¹ / ₂	11 lbs.

All Dimensions are in inches