



# Model 30EBX25, 30EBX50, 30EFX25

## Well Type Manometer

### Specifications

#### Scales

- A – Inches and tenths
- F – Centimeters & millimeters
- G – Inches & tenths of water using 827 Red Oil
- I – Inches & fifths using 295 Red Fluid
- A/F – Duplex – Inches & tenths (left) centimeters & millimeter (right)
- MI – Centimeters of water using 2.95 Fluid Specials

### Fluid Requirements & Instrument Weight

Range	6	12	20	30	35	40	50	60	80	100
Weight	6	9	11	12	—	13	14	17	21	24
#3 Fluid lbs.	0.75	0.75	0.75	0.75	0.75	0.75	0.75	0.75	1.5	1.5
Fl. Oz.	4	4	4	4	4	4	4	4	7	7

Consult factory for special scale and fluids.

#### Accessories

- Bubbler – model Z931R or Z931S
- Line Trap – model Z932R or Z932S
- Moisture Trap – model Z933A10
- Pressure/Vacuum Variator – model Z971A3
- Tank Gauge Accessories
- Pipe Saddle – model Z912S
- Raised Well

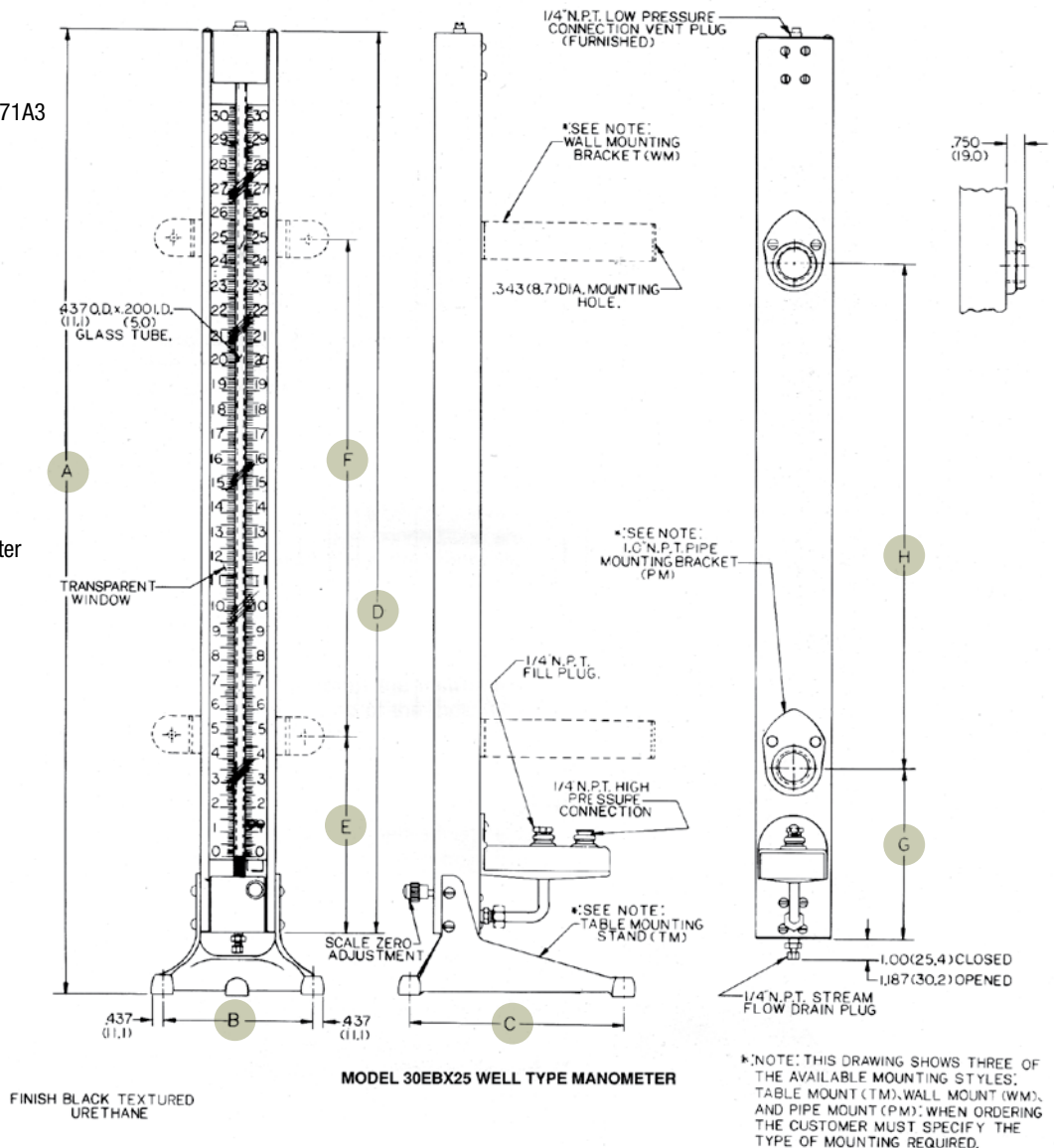
#### Available Fluids

- Z922WA – 1000 Green Concentrate
- Z923R0 – 827 Red Oil
- Z923RU – 100 Red Unity Oil
- Z923BFL – 190 Blue Fluid
- Z924BA – 295 Red Fluid

### Ordering Information

To order a Meriam well-type manometer custom-made to your specifications, please contact your Meriam sales representative with the following information:

- Range
- Mounting Style
- Safe Working Pressure
- Scale Description



# Model 30EBX25, 30EBX50, 30EFX25

## Well Type Manometer (Specifications Continued)

Dimensions Table

Range	A	B	C	D	E	F	G	H
6"	15.25 (387.4)	5.125 (130.2)	7.75 (196.9)	12.75 (323.9)	6.25 (158.9)	3.75 (95.3)	9.00 (228.6)	—
12"	21.25 (539.8)	5.125 (130.2)	7.75 (196.9)	18.75 (476.3)	8.00 (203.2)	5.50 (139.7)	7.00 (177.8)	—
20"	29.25 (743.0)	5.125 (130.2)	7.75 (196.9)	26.75 (679.5)	8.00 (203.2)	10.50 (266.7)	7.00 (177.8)	—
30"	39.25 (997.0)	5.125 (130.2)	7.75 (196.9)	36.75 (933.5)	8.00 (203.2)	20.50 (520.7)	7.00 (177.8)	19.50 (495.3)
35"	44.25 (1124.0)	8.00 (203.2)	12.00 (304.8)	41.75 (1060.5)	8.00 (203.2)	25.50 (647.7)	7.00 (177.8)	24.50 (622.30)
40"	49.25 (1251.0)	8.00 (203.2)	12.00 (304.8)	46.75 (1187.5)	8.00 (203.2)	30.50 (774.7)	7.00 (177.8)	29.50 (749.3)
50"	59.25 (1505.0)	8.00 (203.2)	12.00 (304.8)	56.75 (1441.5)	8.00 (203.2)	40.50 (1028.7)	7.00 (177.8)	39.50 (1003.3)
60"	69.25 (1759.0)	8.00 (203.2)	12.00 (304.8)	66.75 (1695.5)	8.00 (203.2)	50.50 (1282.7)	7.00 (177.8)	49.50 (1257.3)
80"	89.25 (2267.0)	8.00 (203.2)	12.00 (304.8)	86.75 (2203.5)	8.00 (203.2)	70.50 (1790.7)	7.00 (177.8)	69.50 (1765.3)
100"	109.25 (2775.0)	8.00 (203.2)	12.00 (304.8)	106.75 (2711.5)	8.00 (203.2)	90.50 (2298.7)	7.00 (177.8)	89.50 (2273.3)

NOTE: All numbers in parentheses are in millimeters.



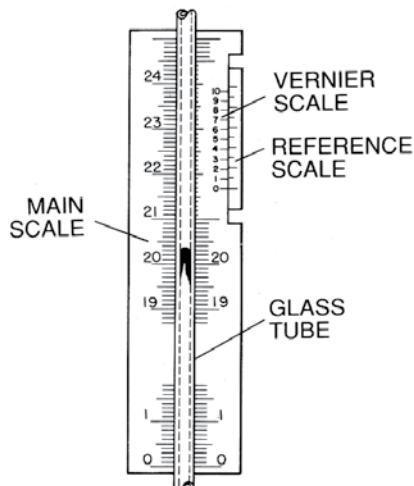
MERIAM  
Model 30EBX25  
Table Mount



MERIAM  
Model 30EBX50  
Table Mount

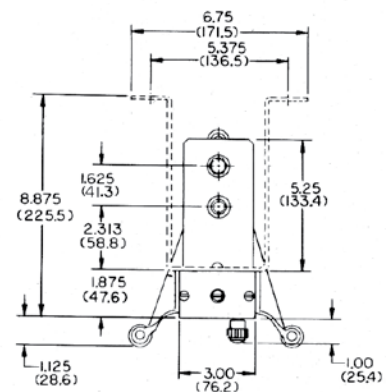


MERIAM  
Model 30EFX25 TM  
Vernier Model



### Verniers

With the full scale vernier, readings can be obtained to  $\frac{1}{10}$  of the main scale subdivision. A reading is observed by aligning the fluid meniscus with the nearest lower scale division. The distance required to accomplish this is measured on the vernier scale. This is added to the main scale for overall reading.

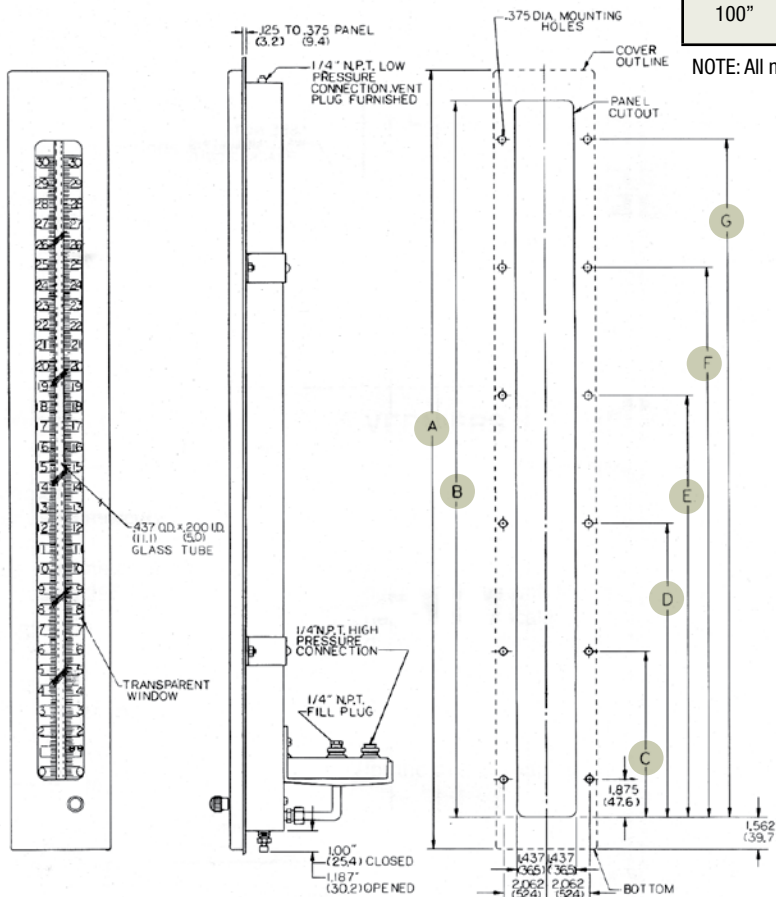
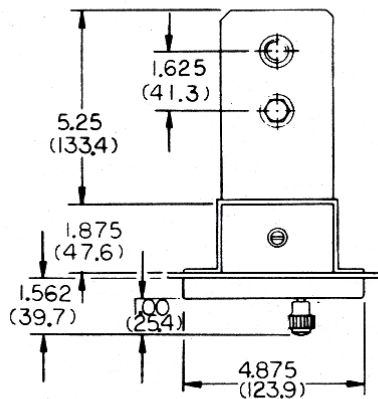


# Model 30EBX25, 30EBX50, 30EFX25

## Well Type Manometer (Specifications Continued)

Dimensions Table

Range	A	B	C	D	E	F	G
6"	14.375 (365.1)	11.250 (285.8)	5.625 (142.9)	9.375 (238.1)	—	—	—
12"	20.375 (517.5)	17.250 (438.2)	7.375 (187.4)	12.875 (327.0)	15.375 (390.5)	—	—
20"	28.375 (720.7)	25.250 (641.4)	7.375 (187.4)	17.875 (454.0)	23.375 (593.7)	—	—
30"	38.375 (974.7)	35.250 (895.4)	7.375 (187.4)	17.625 (447.7)	27.875 (708.0)	33.375 (847.7)	—
35"	43.375 (1101.7)	40.250 (1022.4)	7.375 (187.4)	20.125 (511.2)	32.875 (835.0)	38.375 (974.7)	—
40"	48.375 (1228.7)	45.250 (1149.4)	7.375 (187.4)	22.625 (574.7)	37.875 (962.0)	43.375 (1101.7)	—
50"	58.375 (1482.7)	55.250 (1403.40)	7.375 (187.4)	191.25 (485.8)	36.125 (917.6)	47.875 (1216.0)	53.375 (1355.7)
60"	68.375 (1736.7)	65.250 (1657.4)	7.375 (187.4)	66.75 (1695.5)	42.125 (1070.0)	57.875 (1470.0)	63.375 (1609.7)
80"	88.375 (2244.7)	85.250 (2165.4)	7.375 (187.4)	29.125 (739.8)	56.125 (1425.6)	77.875 (1978.0)	83.375 (2117.7)
100"	108.375 (2572.7)	105.250 (2673.4)	7.375 (187.4)	36.125 (917.6)	69.125 (1755.8)	97.875 (2486.0)	103.37 (2625.7)



NOTE: All numbers in parentheses are in millimeters.