



Autoclave Analyzer

For Steam Sterilizers

The AA100 is a first of its kind diagnostic tool that provides real time measurements from an autoclave during a sterilization cycle. The analyzer will speed up repair time, streamline preventative maintenance and help with the training of new biomedical technicians.

With 4 RTD temperature inputs and 2 pressure inputs the Autoclave Analyzer captures all the measurements as they are happening during the autoclave run cycle.

The AA100 data is highly accurate, NIST traceable, and time synchronized. Data logging, exportable test logs, several user configurable inputs and multiple engineering units make this an asset to all biomedical service technicians working with steam sterilization.



Definable Measurement Solutions

- The Autoclave Analyzer provides you with a specialized service tool for maintenance and calibration of steam sterilizers.
- With multiple measurement solutions in one device you can be more efficient as you diagnose the system.
- Built on a foundation of measurements traceable to NIST, Western is able to combine temperature and pressure measurement instruments in a single enclosure.
- Use as a mobile technician tool.
- Real-time monitoring of a steam sterilization cycle.

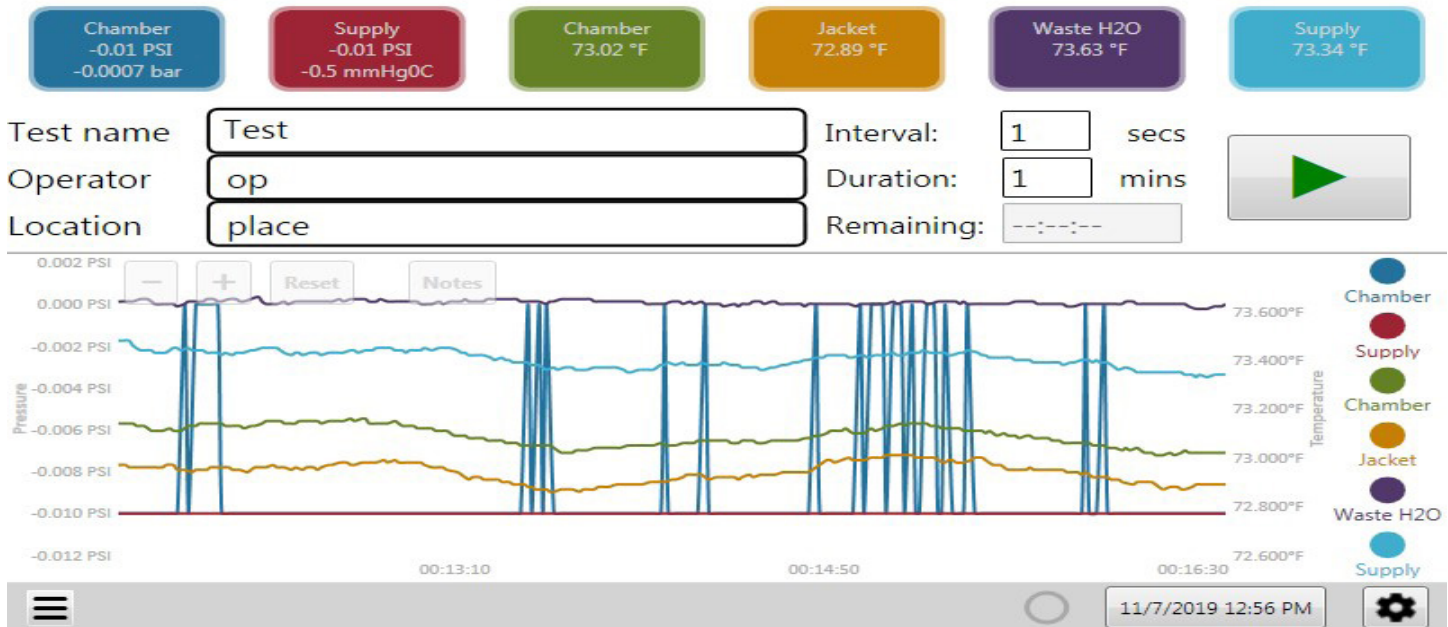
Use Cases

- Medical device technicians tool
- Intergrated digital measurement platform
- Autclave preventative maintenance
- Trouble shooting
- Performance Confirmation & reporting
- Training Tool

Benefits

- Specialized service tool for maintenance and calibration of steam sterilizers
- One device with correlated independent measurements to verify the function of your sterilizer
- Reduce diagnostic and service time
- NIST traceable measurements
- 3 operation modes: Live, Record, and Review
 1. All data logs are date time stamped
 2. PDF or Excel (.txt file) report generation
 3. Long term storage of previous test(s)
- Live graph as the test is running
 1. Each measurement is displayed in a unique color
 2. Pan and zoom (in Review & Test mode)
 3. Hide/show measurements on graph
- Additional time stamped notes section
- User selectable measurement units

Cycle for Steam Sterilizers



Specifications

Pressure Measurement

- Two 100 psi compound Isolated sensors
- -14.5 psi to 100 psi
- Accuracy Specification \pm (0.02% of reading and 0.0050% of full scale)

Temperature Measurement

- Four Class APT100 RTDs
- Tolerance = \pm (0.15 + 0.002 |t|) °C

Temperature Specification:

- Operating range: 41° F - 104° F (5° C - 40° C)
- Storage range: -32°F - 140° F (-35°C to 60°C)

Connections:

- 1/8" Female NPT 316SS
- USB - to export data
- 12 V DC wall adaptor with locking power cord
- Dimensions: 12.5" L x 9" W x 3.9" D
- Device weight - 9 lbs; in carrying case - 12 lbs.

Product Options

Autoclave Analyzer Unit, Part Number AA100 includes:

- 10.2" touch-panel computer
- Four RTD temperature sensor ports
- Two compound isolated 100 psi pressure ports
- Wireless keyboard and mouse
- Soft-sided carrying case

Autoclave Accessories Kit, Part number AA101 includes:

- Four 3.3m 4 pin M12-F A coded cables
- Four Class A RTD M12 A coded probe connectors
- Two 3m FVCO-FVCO 100 psi minimum rated steam pressure hoses
- Four 1/8" MNPT to MVCO pressure fittings