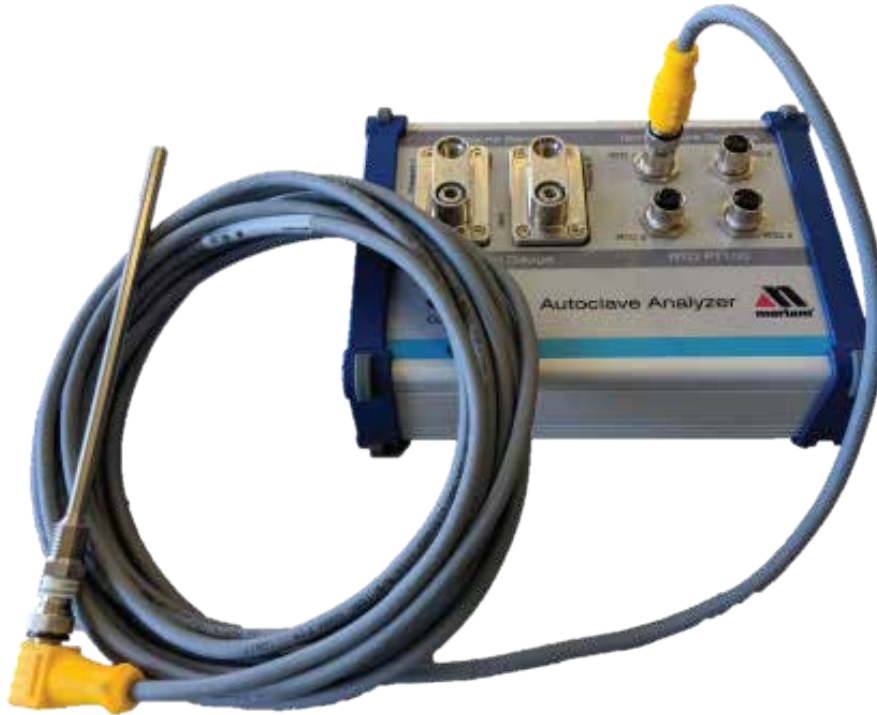




10920 Madison Avenue  
Cleveland, Ohio 44102 USA

**A Trusted Leader in Measurement  
& Calibration Solutions**

# Autoclave Analyzer for Steam Sterilizers



## Maintenance & Calibration Tool

The autoclave analyzer provides you with a specialized service tool for maintenance and calibration on steam sterilizers.

With multiple measurement solutions in one device, you can better serve your customers by being more efficient as you diagnose the system.

## Base Configuration & Flexibility

The base configuration includes 2 premier accuracy pressure and 4 high resolution temperature instruments. You can customize the device and software to integrate with any diagnosis software or specific measurement requirements.

## Features

- 2 - Premier gauge pressure measurements psi resolution
- 4 - Premier temperature measurements (RTD Pt100) of resolution

## Optional Features

- Solenoid coil monitoring
- Pressure switch monitoring
- System voltage checks
- Steam trap monitoring

+ 1 216 281 1100

[meriam.com](http://meriam.com)

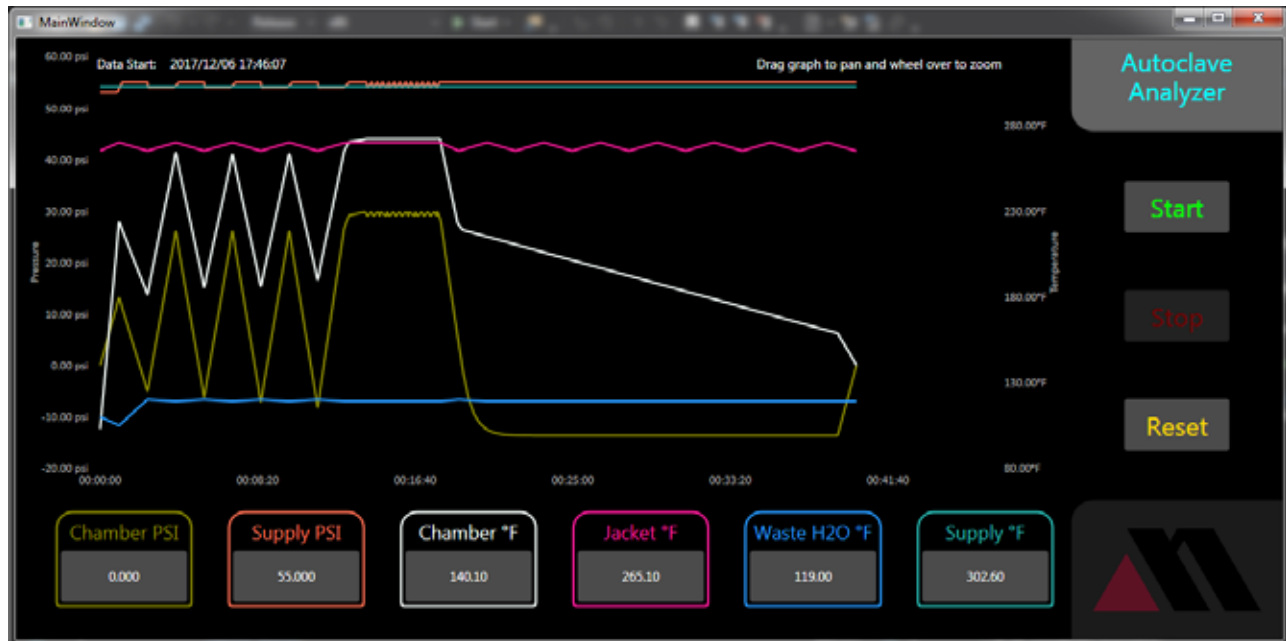
(800) 817-7849



10920 Madison Avenue  
Cleveland, Ohio 44102 USA

**A Trusted Leader in Measurement  
& Calibration Solutions**

# Prevac Cycle for Steam Sterilizers



## Real-time logging

Technicians can monitor a steam sterilization cycle in real time. With this data, they can quickly identify and repair equipment that does not perform according to specifications.

Reducing diagnosis and service time leads to more service calls per day. Ultimately, generating more revenue while adding to customer satisfaction.

## Capture Intermittent Events

Technicians can leave the autoclave analyzer in place to capture intermittent system events in long term data logs. These logs help technicians evaluate multiple cycle runs throughout a sterilizer's daily workflow.

## Features

- Real time measurement values
- In full measurement precision
- Real time measurement graph
- Each measurement displayed in a unique color
- Automatic autoclave analyzer device discovery
- Start, Stop, and Reset
- Live mute/show measurements on graph
- Live graph pan and zoom
- Date time stamp
- Live measurement history on graph using cursor hover

## Optional Features

- What features do your requirements need?
- How can we help you?

+ 1 216 281 1100

meriam.com

(800) 817-7849