

Autoclave Analyzer For Steam Sterilizers



The AA100 is a first-of-its-kind diagnostic tool that provides real-time measurements from an autoclave during a sterilization cycle. The analyzer will speed up repair time, streamline preventative maintenance, and help with the training of new biomedical technicians.

With 4 RTD temperature inputs and two pressure inputs, the Autoclave Analyzer captures all the measurements in real-time during the autoclave run cycle.

The AA100 data is highly accurate, NIST traceable, and time-synchronized. Data logging, exportable test logs, several user-configurable inputs, and multiple engineering units make this an asset to all biomedical service technicians working with steam sterilization.



Definable Measurement Solutions

- The Autoclave Analyzer provides you with a specialized service tool for maintenance and calibration of steam sterilizers.
- With multiple measurement solutions in one device you can be more efficient as you diagnose the system.
- Built on a foundation of measurements traceable to NIST, Western is able to combine temperature and pressure measurement instruments in a single enclosure.
- Use as a mobile technician tool.
- Real-time monitoring of a steam sterilization cycle.

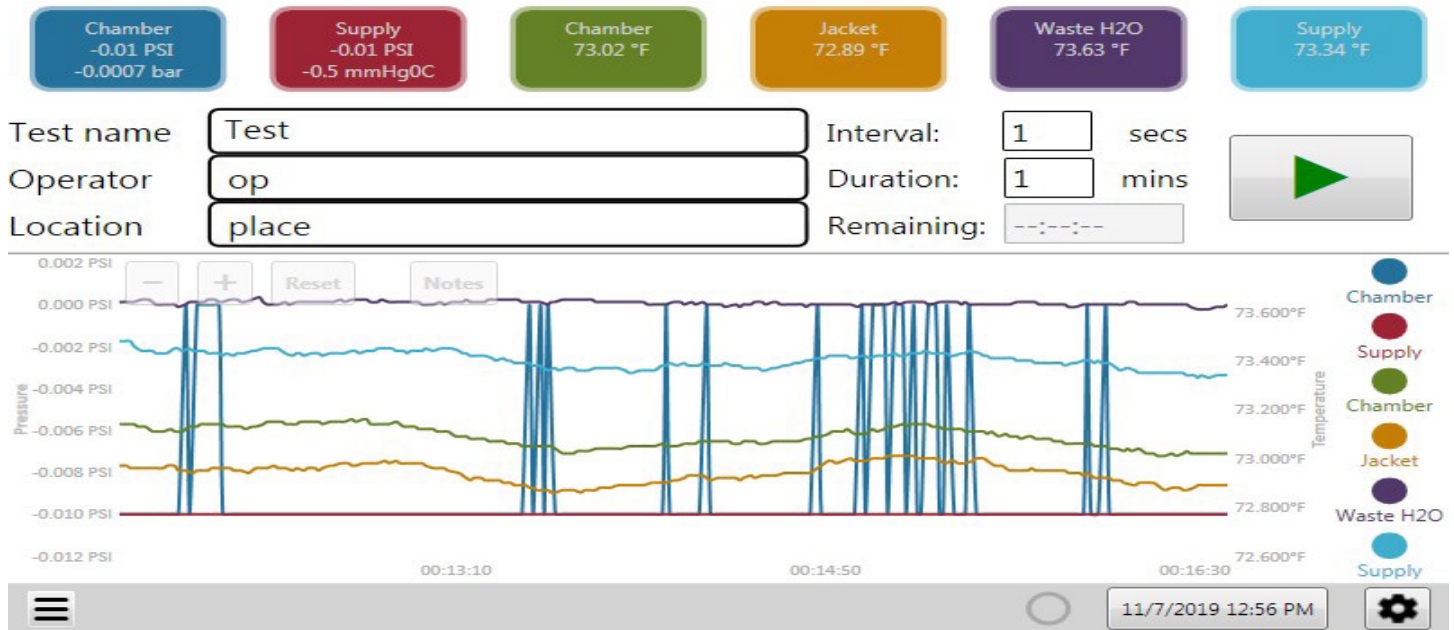
Use Cases

- Medical device technicians tool
- Integrated digital measurement platform
- Autoclave preventative maintenance
- Trouble shooting
- Performance Confirmation & reporting
- Training Tool

Benefits

- Specialized service tool for maintenance and calibration of steam sterilizers
- One device with correlated independent measurements to verify the function of your sterilizer
- Reduce diagnostic and service time
- NIST traceable measurements
- 3 operation modes: Live, Record, and Review
 1. All data logs are date time stamped
 2. PDF or Excel (.txt file) report generation
 3. Long term storage of previous test(s)
- Live graph as the test is running
 1. Each measurement is displayed in a unique color
 2. Pan and zoom (in Review & Test mode)
 3. Hide/show measurements on graph
- Additional time stamped notes section
- User selectable measurement units

Cycle for Steam Sterilizers



Specifications

Pressure Measurement

- Two 100 psi compound Isolated sensors
- -14.5 psi to 100 psi
- Accuracy Specification \pm (0.02% of reading and 0.0050% of full scale)

Temperature Measurement

- Four Class APT100 RTDs
- Tolerance = \pm (0.15 + 0.002 |t|) °C

Temperature Specification:

- Operating range: 41° F - 104° F (5° C - 40° C)
- Storage range: -32° F - 140° F (-35°C to 60°C)

Connections:

- 1/8" Female NPT 316SS
- USB - to export data
- 12 V DC wall adaptor with locking power cord
- Dimensions: 12.5" L x 9" W x 3.9" D
- Device weight - 9 lbs; in carrying case - 12 lbs.

Product Options

Autoclave Analyzer Unit, Part Number AA100 includes:

- 10.2" touch-panel computer
- Four RTD temperature sensor ports
- Two compound isolated 100 psi pressure ports
- Wireless keyboard and mouse
- Soft-sided carrying case

Autoclave Accessories Kits (Optional)

Part Number AA101 includes:

- Four 3.3m 4 pin M12-F A coded cables
- Four Class A RTD M12 A coded probe connectors
- Two 3m FVCO-FVCO 100 psi minimum rated steam pressure hoses
- Four 1/8" MNPT to MVCO pressure fittings

Part Number AA102 includes:

- Four 1/8" tube x 1/8" MNPT stainless steel fittings
- Four 1/8" FNPT x 1/8" MNPT stainless steel fittings
- Four 1/8" FNPT x 1/2" MNPT stainless steel fittings
- Four 1/8" dia RTD probe sensors