



10920 Madison Ave
Cleveland | Ohio | 44102 | USA
+ 1 216 281 1100
www.Meriam.com
(800) 817-7849

A trusted leader in measurement
and calibration solutions.

Installation Instructions for meriSuite™ CG

Outline of the steps to install meriSuite CG

1. Read these Installation Instructions first.
2. Check your version of Microsoft Windows.
3. Download and install the meriSuite CG application.
4. Install the USB Driver.
5. Read the meriSuite CG User Manual.

Check your version of Microsoft Windows

The meriSuite CG app is compatible with these versions of Windows.

- Windows 10
- Windows 8 (8.1)
- Windows 7, Service Pack 1

General information

Notification Statements

Disclaimer

Every precaution has been taken in the preparation of this manual. Nevertheless, Meriam assumes no responsibility for errors or omissions or any damages resulting from the use of the information contained in this publication, including, without limitation, incidental, special, direct or consequential damages. MERIAM MAKES NO REPRESENTATIONS OR WARRANTIES WITH RESPECT TO THE ACCURACY OR COMPLETENESS OF THE CONTENTS HEREOF AND SPECIFICALLY DISCLAIMS ANY IMPLIED WARRANTIES OF MERCHANTABILITY OR FITNESS FOR ANY PARTICULAR PURPOSE. Meriam reserves the right to revise this publication and to make changes from time to time in the content hereof without obligation to notify any person of such revision or changes.

In no event shall Meriam be liable for any indirect, special, incidental, consequential, or punitive damages or for any lost profits arising out of or relating to any services provided by Meriam or its affiliates.

It is not possible for Meriam to identify all foreseeable uses or misuses, therefore all persons involved in commissioning, using, or maintaining this product must satisfy their self that each intended application is acceptable.

Copyright

This publication is proprietary to Meriam and no ownership rights are transferred. Neither this manual, nor any of the material contained herein, may be reproduced without the prior written consent of Meriam.

Trademark information

meriSuite™ is a trademark of Meriam.

All other trademarks are the property of their respective owners.

Download and install meriSuite CG setup(.exe)

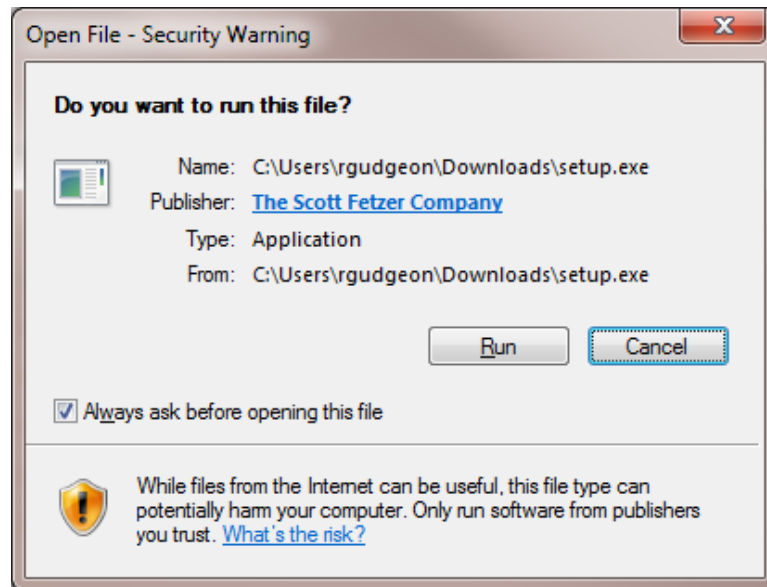
<http://content.meriam.com/install/meriSuiteCG/setup.exe>

Note: Different browsers notify you in different ways when a file has downloaded and where to open it.

1. Open the **setup** file and the following dialog box appears. Click **Run**.

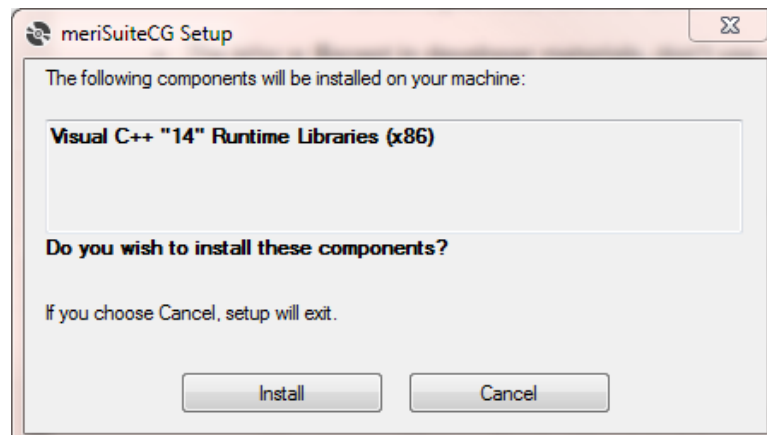
Note: Some of you may see the full file name **setup.exe**.

Note: Meriam is a Scott Fetzer Company.

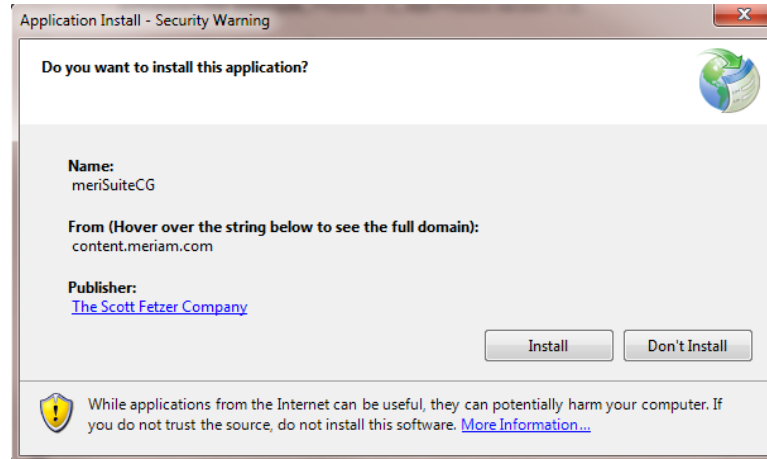


2. After you click **Run**, the meriSuite CG Setup dialog box appears, click **Install**.

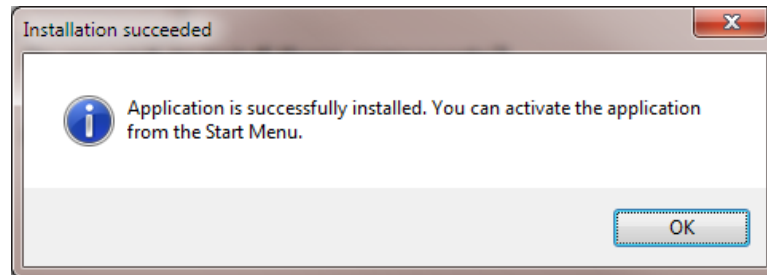
Note: Your computer will only display "(x86)" if you have a 32-bit system.



3. Click **Install** again.



4. Click **OK**.



Windows 10 requires a few more steps



1. Select the **Start** button on the far left of the taskbar.
2. Scroll through the list of apps to find **meriSuite CG** and right-click the **meriSuite CG** app.
3. Click **More**.
4. Select **Run as administrator**.

Install the USB Driver

1. Read the **USB Drivers Installation Instructions 9R607** on the [Downloads](#) page on www.meriam.com.
2. The instructions have links that you can click to download the required USB Driver.
3. Follow the on-screen instructions.

Congratulations. You are ready to use meriSuite CG.

1. A shortcut for meriSuite CG appears on your desktop.
2. Click **9R609 meriSuite CG User Manual** to open the manual or go to the [Products Manuals](#) page on www.meriam.com to find the manual.

Error message: meriSuite Setup

If you see this message appear, follow the steps below:

"An error occurred while installing system components for meriSuite CG. Setup cannot continue until all system components have been successfully installed."

1. Uninstall the existing version of **Microsoft Visual C++ 2015 Redistributable (x86)**... on your computer. See the figure below.
2. Open the Windows' Control Panel to find and uninstall the current version of **Microsoft Visual C++ 2015**.
3. Close the error window and reopen the **setup** file.

Help

Meriam Contact Information

Address

Meriam
10920 Madison Avenue
Cleveland | Ohio | 44102 | USA

Telephone

US customers	(800) 817-7849
International customers	+ 1 216 281 1100

Fax

US & International customers + 1 216 281 0228

E-mail addresses

Return Material Authorization / Service & Repair Department

returnforms@meriam.com

Sales

sales@meriam.com

Website

meriam.com

Find a local Meriam representative

Use this map to help you find a Meriam representative.

<http://www.meriam.com/representatives-map/>