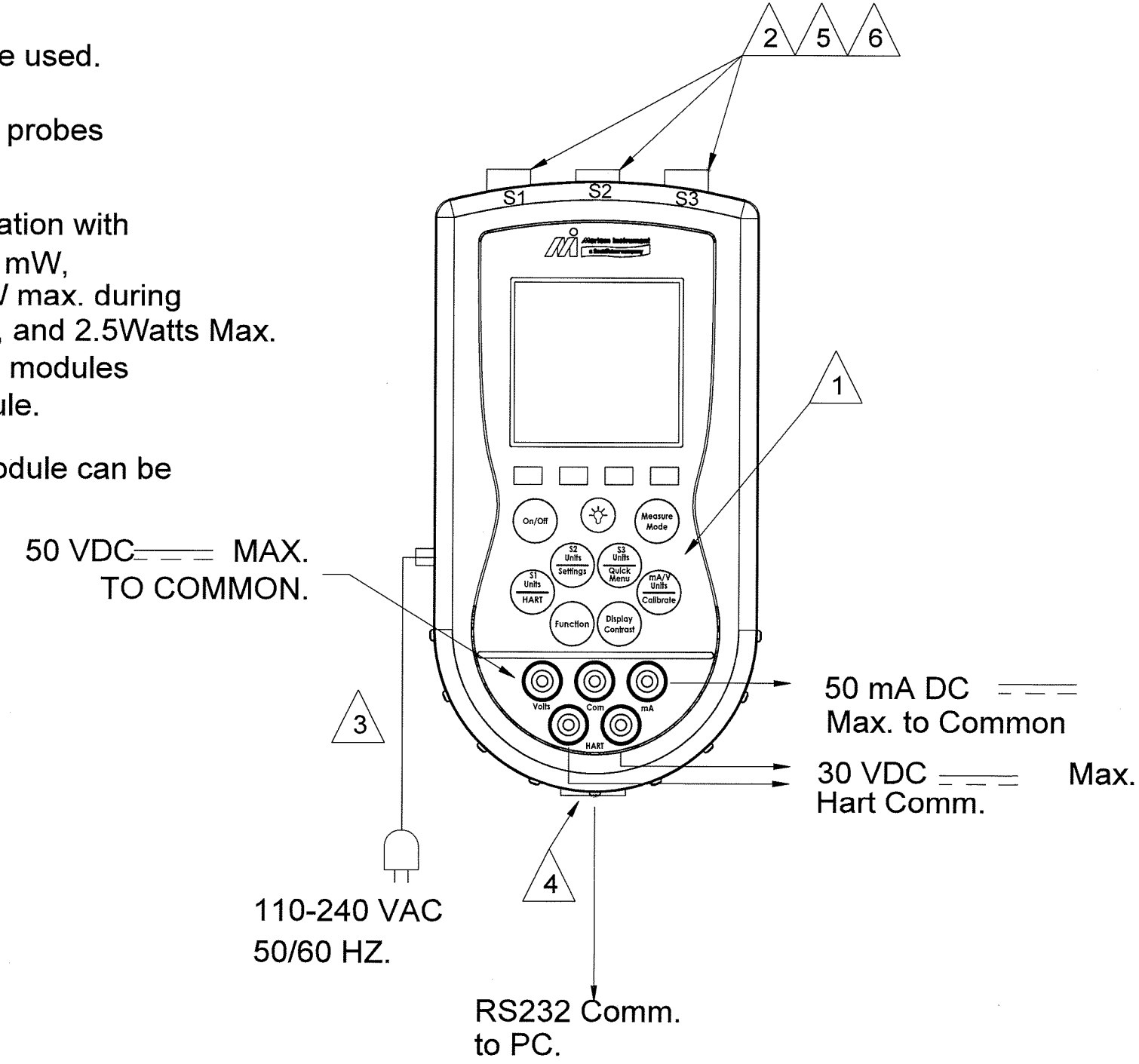


Multifunction Tester MFT 4000-11-X-01
Multifunction Tester MFT 4005-11-X-01
Multifunction Tester MFT 4010-11-X-01

NON-HAZARDOUS LOCATION

- 1 Batteries: (6) 1.5 VDC Alkaline or NiMH, battery replacement, (removal/replacement), shall only be performed in a non-hazardous area. Do not mix new with used batteries or of different type or manufacture.
- 2 Modules may be removed or replaced.
- 3 AC/DC adapter may be used, (Meriam P/N 9B000007)
- 4 RS232 port may be used.
- 5 RTD/Temperature probes may be used.
- 6 Max. power dissipation with all modules is 600 mW, normal use, 1.35W max. during DOF downloading, and 2.5Watts Max. with use of any (2) modules and (1) VMA module.

Note: Only (1) VMA module can be used in any given unit.



MFT 40XX Series Intrinsic Safety Control Drawing

HAZARDOUS LOCATION

Intrinsically Safe/Secu'rite Intri'nseque Class I; Div 1; Groups A, B, C, D: T5
 Exia

WARNINGS/AVERTISSEMENTS:

1. Substituting of Components may impair Intrinsic Safety!
 LA SUBSTITUTION DE COMPOSANTS PEUT COMPROMETTRE LA SECURITE INTRINSEQUE;
2. Modules must not be installed, removed or replaced.
3. Do not replace, remove or install batteries or mix new with used batteries or of different type or manufacture.
 Ne PAS REMPLACER, ENLEVE OU INSTALLER DES PILES OU MELANGE NOUVEL AVEC LES PILES UTILISEES OU DE TYPE OU DE FABRICANT DIFFERENT.
4. RS232 comm. port must not be used.
5. AC/DC Adapter must not be used.
6. Consult manual for media compatibility, max. Pressure or Temperature Range and for additional information regarding Hazardous location use.
7. RTD/Temperature probes must not be installed, removed or replaced.
 $V_{max}=50VDC$ $I_{max}=50mA$ $C_i=0.1\mu F$ $L_i=0$
 $V_{max}=30VDC$ $I_{max}=100mA$ $C_i=1.24\mu F$ $L_i=0$
 $V_{max}=50VDC$ $I_{max}=50\mu A$ $C_i=0.1\mu F$ $L_i=0$
 Connect to Certified Intrinsically Safe circuit only.

8 Use modules from the following list only (append -XX-1 to module):

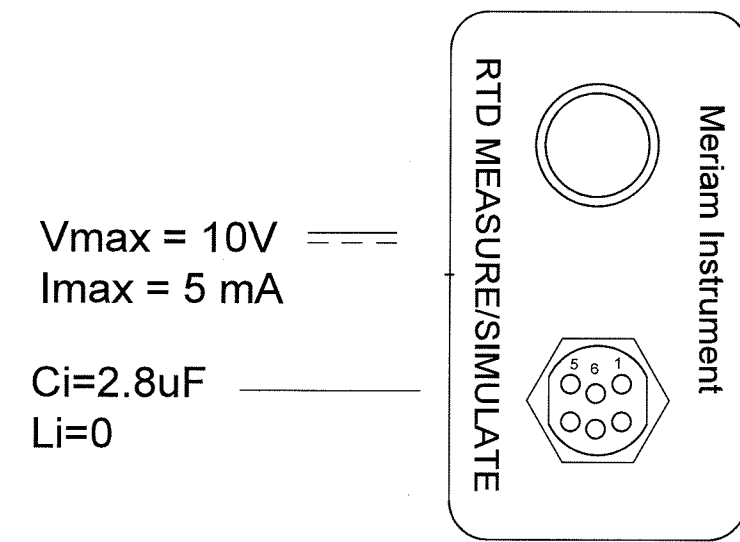
| | | | |
|---------|------------|---------|-----------|
| DDN0100 | DGI2000 | EDN2000 | FDN0010 * |
| DDN0200 | DAI0900 | EGI0020 | FDN0020 |
| DDN0400 | DAI2000 | EGI0200 | GGI3000 * |
| DDN2000 | DAI5200 * | EGI0500 | RIO4000 |
| DGI0020 | DAI41000 * | EGI1000 | RTD1000 |
| DGI0200 | DAI52000 * | EGI1500 | TIO0110 |
| DGI0500 | EDN0100 | EGI2000 | VMA0055 |
| DGI1000 | EDN0200 | EAI0900 | |
| DGI1500 | EDN0400 | EAI2000 | |

- 9 To prevent ignition of hazardous atmospheres, batteries must only be changed in an area known to be non-hazardous.
 AFIN DE PREVENIR, INFLAMMATION D'ATMOSPHERES DANGEREUSES, NE CHANGER LES BATTERIES QUE DANS DES EMBLEMEMENTS DESIGNES NON DANGEREUX.
 Batteries approved for intrinsic safe location use are:

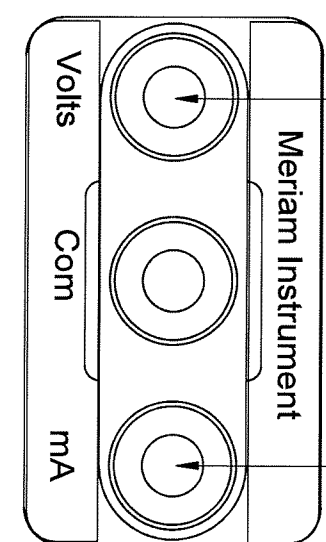
- Qty.(6)1.5VDC Alkaline (Meriam P/N A900614-00011): Duracell, PC1500, 1.5V, 2000mAh; Duracell, MN1500, 1.5V, 2000mAh; Varta, 4906, 1.5V, 2600mAh
- Qty.(6)1.5VDC NiMH (Meriam P/N A900614-00014): Ansmann, 5030481, 1.2V 2400mAh; Varta, 5706, 1.2V 2300mAh
- Qty.(6)1.5VDC Alkaline Industrial Energizer, EN-91, LR06, 1.5V, 2850mAh
- Qty.(6)1.5VDC Alkaline Rayovac Ultra Pro, LR6, 1.5V, 2588mAh

10. Pi max (Hazardous Location Use) = 2.5 Watts

| REVISIONS HISTORY | | | | |
|-------------------|-----------|--|----------|----|
| REV. | ECO # | DESCRIPTION | DATE | BY |
| IR | EO - 5264 | INITIAL RELEASE | 7/15/02 | JS |
| A | | ADDED: "INSTALLED" & CLARIFIED SPECS. | 7/15/02 | JS |
| B | EO - 5264 | ADDED: "RTD/TEMPERATURE PROBE" | 8/15/02 | JS |
| C | EO - 5454 | CHANGES PER EO | 7/29/03 | JS |
| D | EO - 5648 | CHANGES PER EO | 7/14/04 | JS |
| E | EO - 5832 | CHANGES PER EO | 9/27/05 | JS |
| F | EO - 5888 | REDRAWN W/NEW TITLE & CHANGES PER EO | 11/17/05 | GR |
| G | EO-6072 | CHANGED AC/DC ADAPTER FROM A900515-00019 TO 9B000007 | 07-12-06 | MC |
| H | EO - 6312 | ADDED ADDITIONAL ALKALINE BATTERY OPTION | 7/12/07 | TL |
| J | EO - 6584 | ADDED * MODULES TO NOTE 8 | 11/11/08 | TL |
| K | EO - 6796 | ADDED RAYOVAC BATTERY OPTION | 4-8-10 | TL |



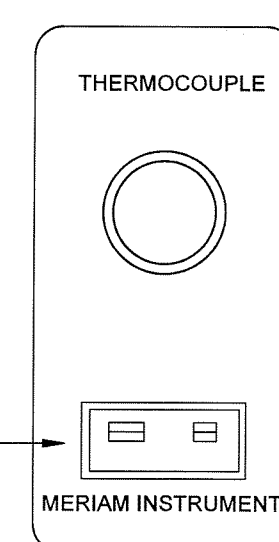
RIO4000-XX-1 MODULE



VMA0055-XX-1 MODULE

Vmax = 55 VDC
 Imax = 24 mA
 Ci=0uF Li=0

Vmax = 55 VDC
 Imax = 100 mA
 Ci=0uF Li=0



TIO0110-XX-1 MODULE

Vmax = 50V
 Imax = 10 mA
 Ci=0uF Li=0

NOTE: GRAPHICS ON PRODUCT ARE FOR ILLUSTRATIVE PURPOSES ONLY AND DO NOT NECESSARILY REFLECT THE ACTUAL GRAPHICS ON THE PRODUCT.

PROPRIETARY AND CONFIDENTIAL
 THE INFORMATION CONTAINED IN THIS DRAWING IS THE SOLE PROPERTY OF MERIAM PROCESS TECHNOLOGIES. ANY REPRODUCTION IN PART OR AS A WHOLE WITHOUT THE WRITTEN PERMISSION OF MERIAM PROCESS TECHNOLOGIES IS PROHIBITED.

| APPROVALS | |
|-----------------------|----------|
| NAME | DATE |
| DRAWN: GREG ROTENBERG | 11-17-05 |
| CHECKED: TRJ LNT | 11-11-08 |
| ENG APPR: [Signature] | |
| MFG APPR: [Signature] | |

meriam
 process technologies
 10920 MADISON AVENUE
 CLEVELAND, OHIO 44102

TITLE: **MERIAM CONTROL DRAWING**

SIZE: DWG. NO. **D 900028-61005** REV **K**

SCALE: 1:1 | WEIGHT: | SHEET 1 OF 1

D 900028-61005-K